



Young Regulator Co.

7100 Krick Rd • Walton Hills, OH 44146
 P: 440-232-9700 • F: 440-232-8266
www.youngregulator.com

Submit 4075-IF 1/17

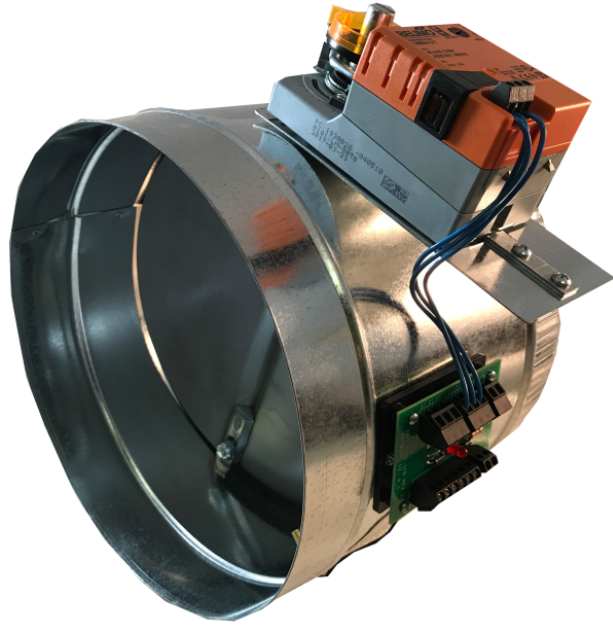
Model 4075-IF

*Motorized Damper
 Modulating VAV Damper w/ 90 Second Motor*

Application and Design

The Young Regulator's "Simple Zone" product line makes stand-alone zoning easier than ever. Each damper assembly comes with a pre-installed temperature sensor, primary actuator, and integrated interface board for easy field connection to our T-720 thermostat.

The 4075-IF Round Zone Damper has a shell and blade constructed of galvanized steel, with a 1/2" round plated steel damper shafts that pivot in oil impregnated bronze bushing. One end is straight, with one end crimped.



*Paired with the T-720 Thermostat (Sold Separately)

STANDARD CONSTRUCTION	
Shell	6" – 10" – 24 ga. 12" – 20" – 20 ga. Galvanized Steel
Blade	20 ga. Galvanized Steel
Shaft	1/2" Plated Steel
Bushing	Oil Impregnated Bronze
Low Leak Seals	EPDM Rubber

SIZE INFORMATION	
One end straight, one end crimped	
Rolled stiffening beads	
NOTE: Dampers greater than 14" diameter will be a spiral shell	
Diameter	6" – 20"
Shell Length	8"

BELIMO LMB24 ACTUATOR	
N24V On-Off and Floating Point Control. Min and Max Air Adjustments Reflective Visual Position Indicator.	
Volts	24V
Watts	1.5
VA	3
Noise	<35 dB (A)
Timing	95 seconds
Torque	45 in. lb.

OPTIONS	
Transformers Pt# 3035	

QUANTITY	DIAMETER	NOTES

PROJECT	LOCATION
CONTRACTOR	DESIGN SPECIFIER



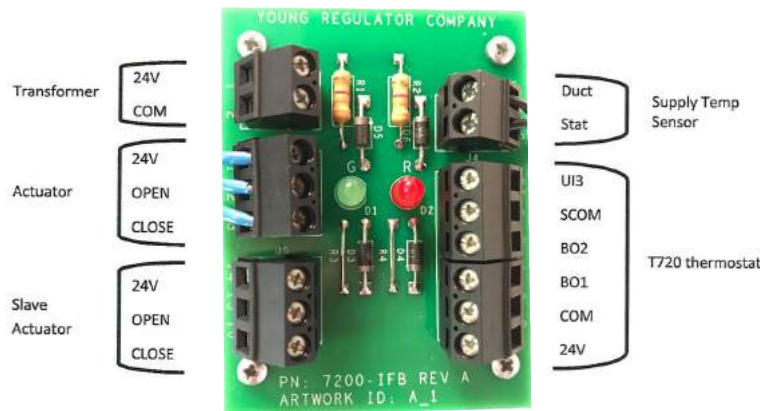
Engineering Specifications

The interface board for the T720 thermostat is provided to aid in the installation of the thermostat and damper assembly. With this option, the supply temperature sensor is preinstalled in the damper and the connections are prewired to the primary actuator and sensor at the factory. Field connections consist of the transformer and thermostat wiring. For convenience, an extra terminal block is provided for installation to a slave damper.

Sequence of Operation:

The supply temperature sensor (AKA duct stat) determines if warm or cold air is available in the supply. This information is shown on the thermostat by displaying Heating mode or Cooling mode. As the thermostat works to control the space temperature to the set-point, the damper will open, close, or modulate as needed. The Interface Board features a GREEN and a RED LED. When lit,

- The GREEN LED indicates the damper is opening
- The RED LED indicates the damper is closing
- When BOTH are lit, the thermostat is satisfied and the damper is stalled



WIRING SCHEMATICS

NOTE: Young Regulator recommends the use of 18 gauge thermostat wire

